

# SYRDBT

## SYRIS Handheld bluetooth RFID Reader

V0200



### **SYRIS Technology Corp.**

Address: 12F., No.16, Sec. 2, Taiwan Blvd., West Dist., Taichung  
City 403, Taiwan

TEL: +886-4-2207-8888

FAX: +886-4-2207-9999

E-Mail: [service@syris.com](mailto:service@syris.com)

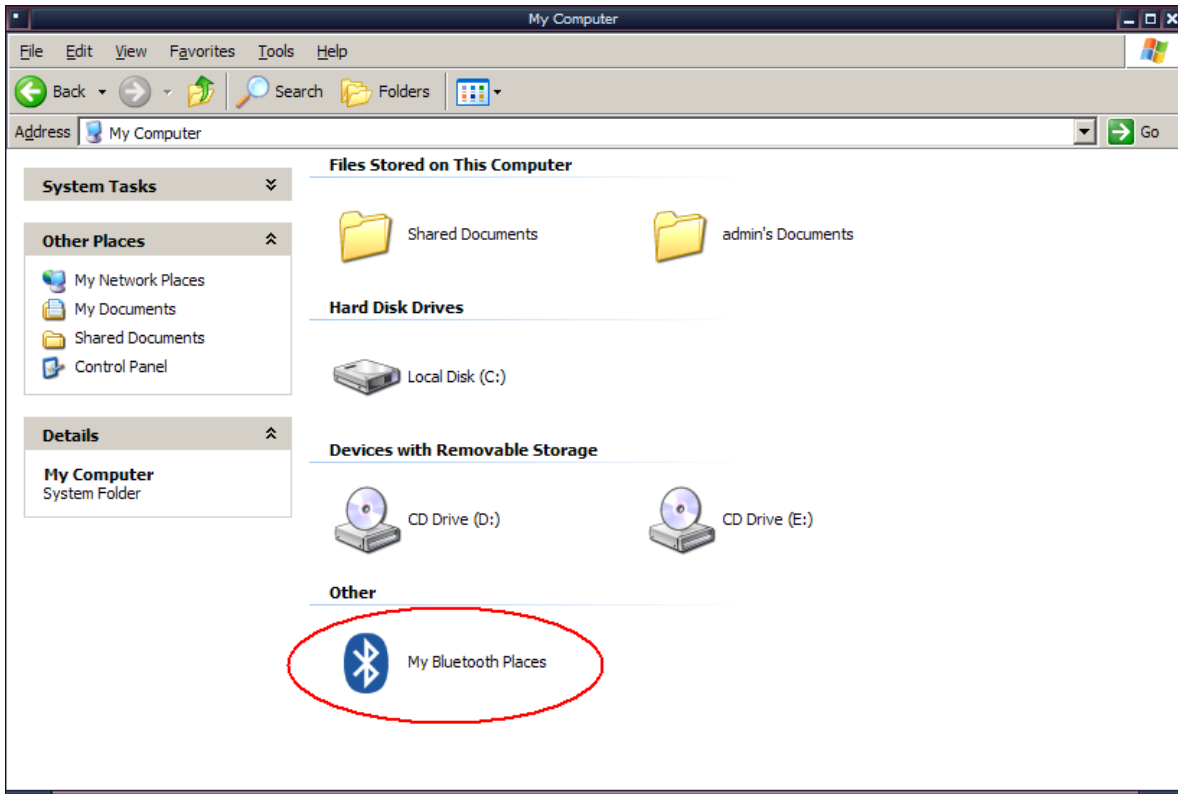
Website: <http://www.syris.com>

## Specification

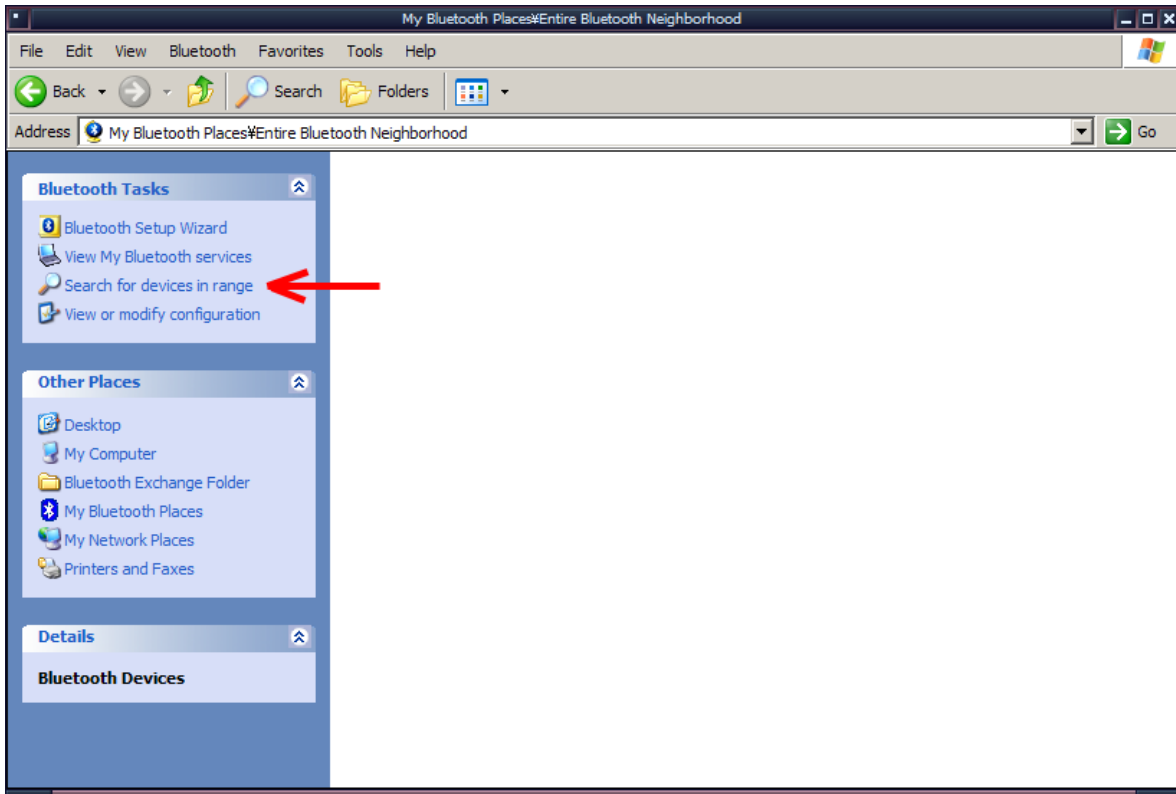
Model	SYRDBT-M1	SYRDBT-IC	SYRDBT-U1
Frequency	13.56 MHz	13.56 MHz	860~960MHz
Interface	Bluetooth V3.0/ 4.0 compliant		
Bluetooth transmission range	up to 20m		
Built-in memory	16,000 records	10,000 records	2,000 records
Read range	up to 5 cm	up to 7 cm	up to 100 cm
Support protocol	Mifare (ISO14443-A)	ISO15693	EPC Class 1 Gen 2; ISO-18000-6C
Operating temperature	0°C to 55°C		
Storage temperature	-20°C to 60°C		
Battery	3.7V 1150mAH Rechargeable Lithium Battery		
Charge Power	Standard USB power - 5V 500mA		
Housing	Splash resistant case		
Dimensions	53 W x 112 H x 19.3 D (mm)		

# SYRDBT Bluetooth connection (Windows OS)

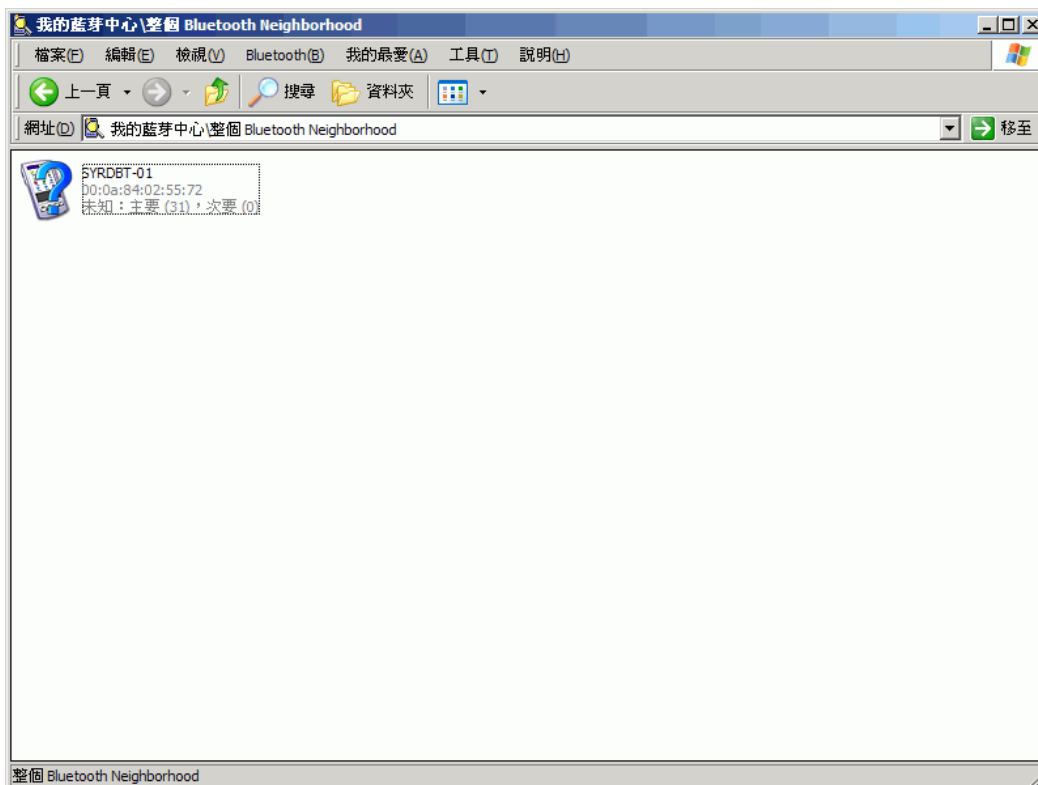
1. Enable your computer's Bluetooth function.
2. After you have successfully installed the Bluetooth software, you will see an icon on your desktop and an icon on Window System Tray. These are two shortcuts to My Bluetooth Places.
3. Double-click My Bluetooth Places.



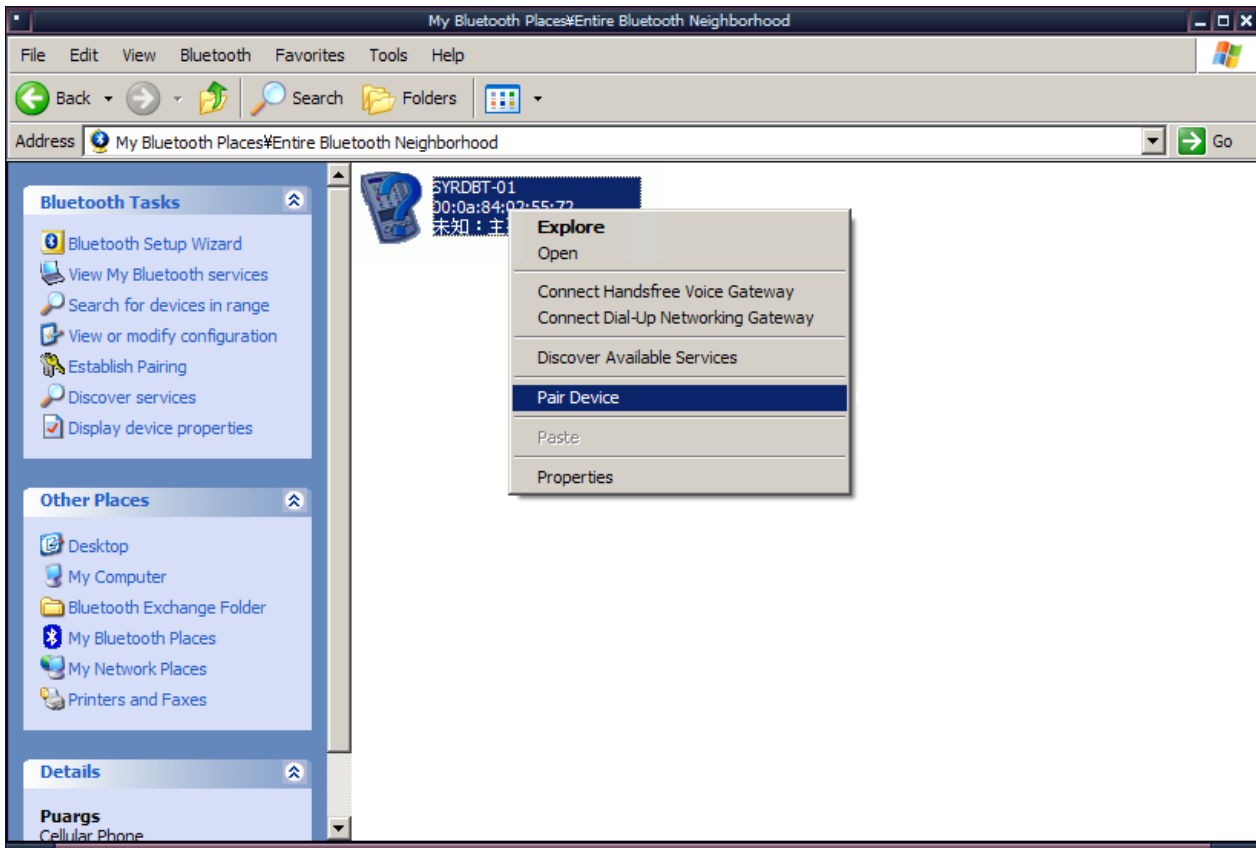
4. Search for Devices looks for Bluetooth devices in the vicinity and displays the devices that it finds in My Bluetooth Places.



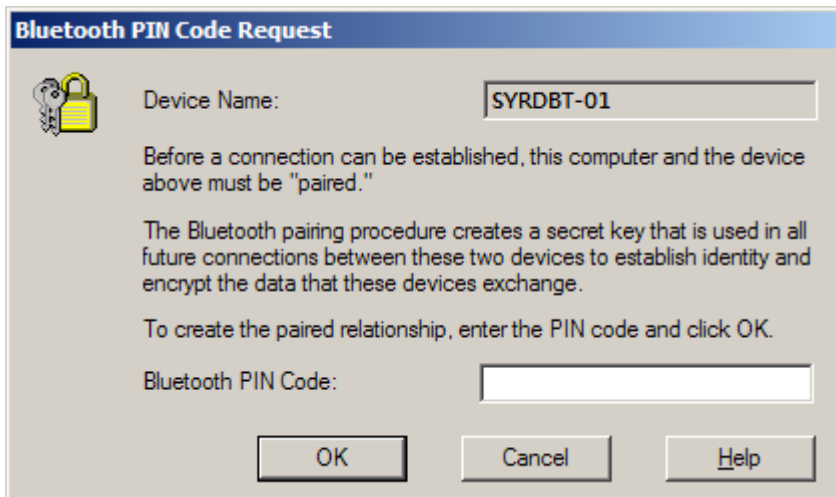
5. After discovering the devices you can have access to, you may perform Service Discovery. Each available device that you have discovered in the Bluetooth Neighborhood provides you with several services.



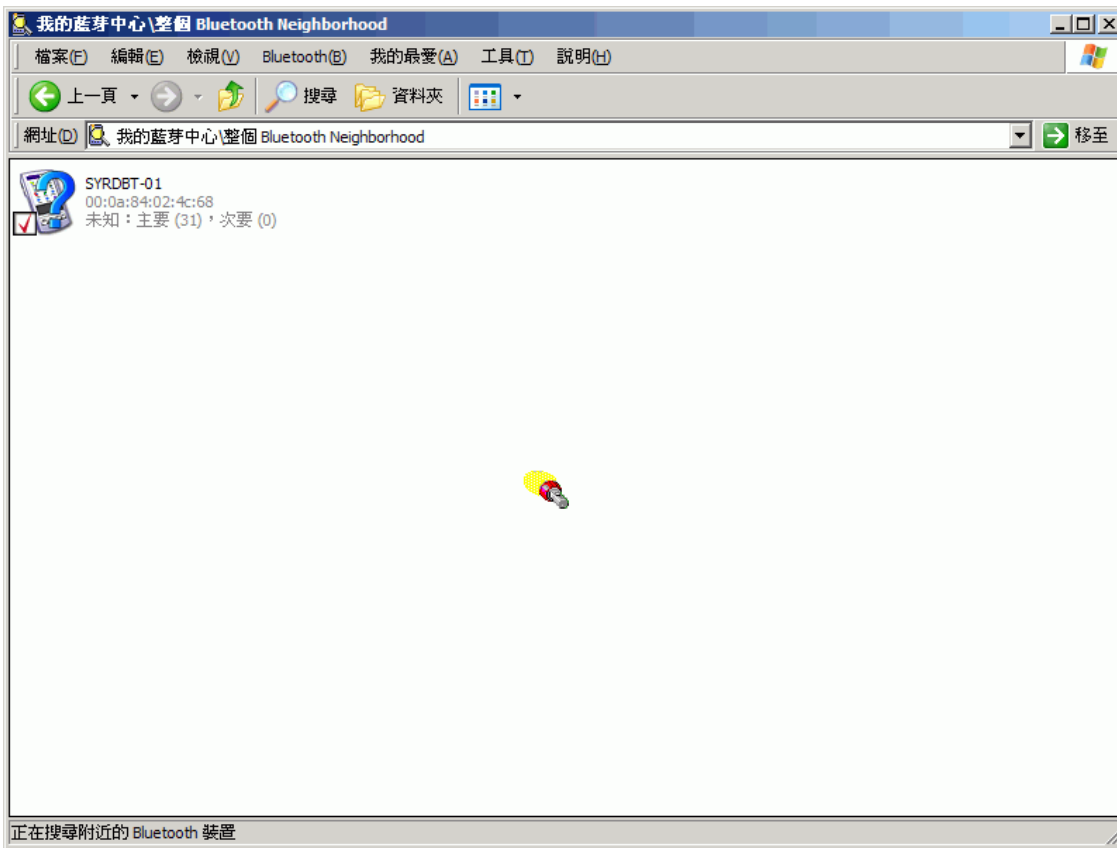
## 6. Pair with Bluetooth Device.



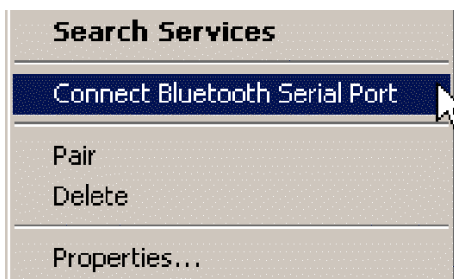
## 7. SYRDBT reader's Bluetooth pin code is "8888".



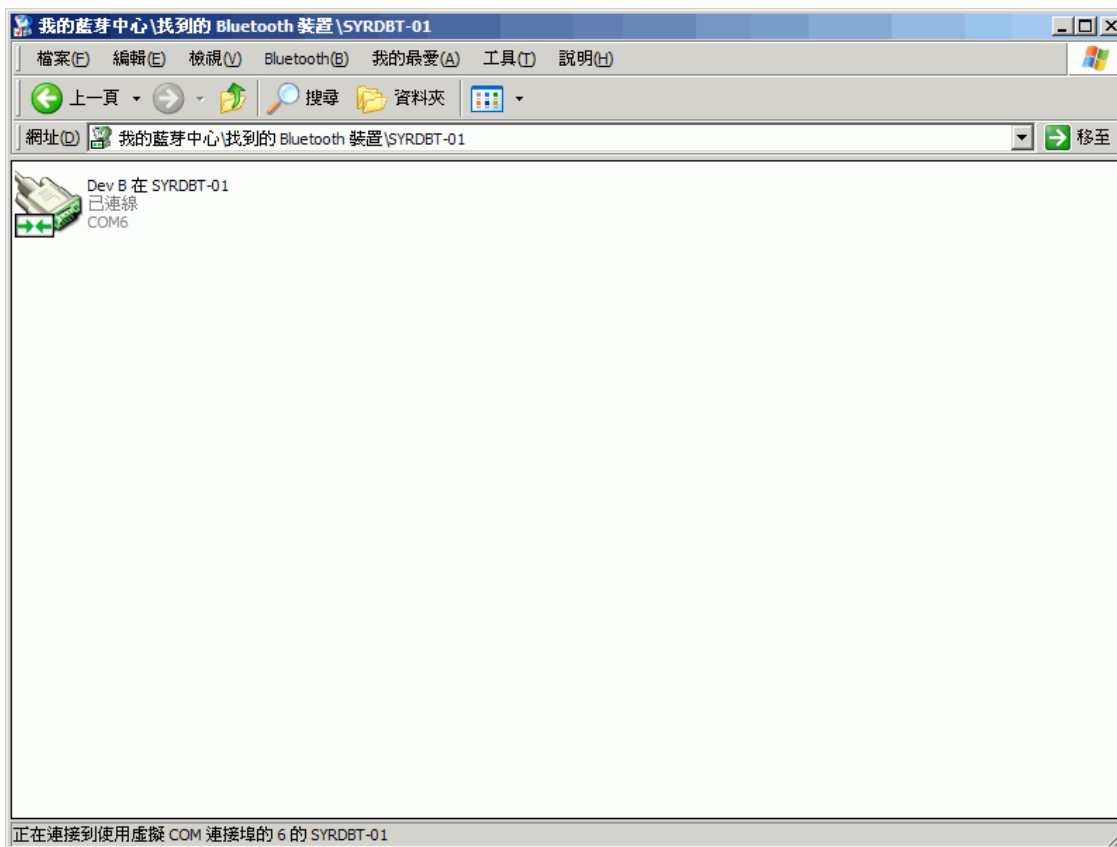
8. Computer and SYRDBT are now paired and able to exchange data.



9. Right-click and select Bluetooth serial port services.

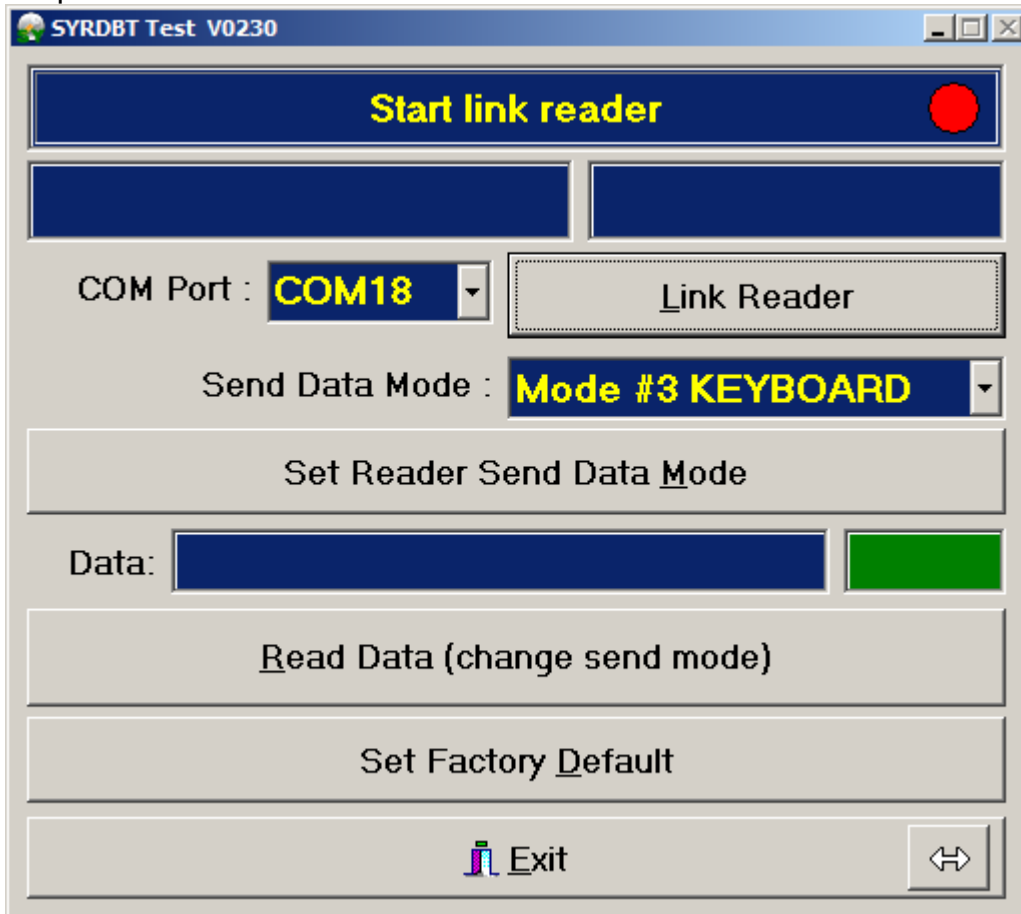


10. Bluetooth Serial Port establishes a wireless connection between two Bluetooth devices. The serial connection can be used by applications as though there is a serial cable between the devices.



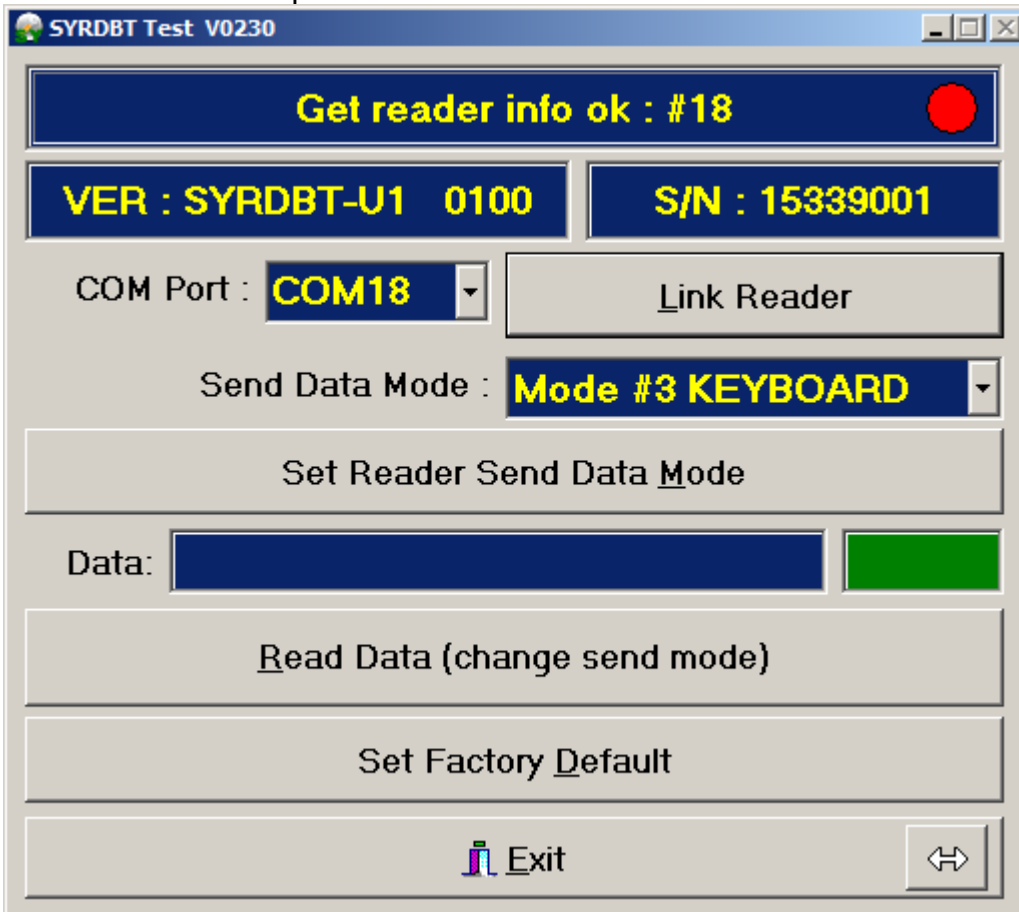
## SYRDBT test tools

1. When you finished COM port mapping, you can execute SYRDBT test tools to read tags and set parameters.



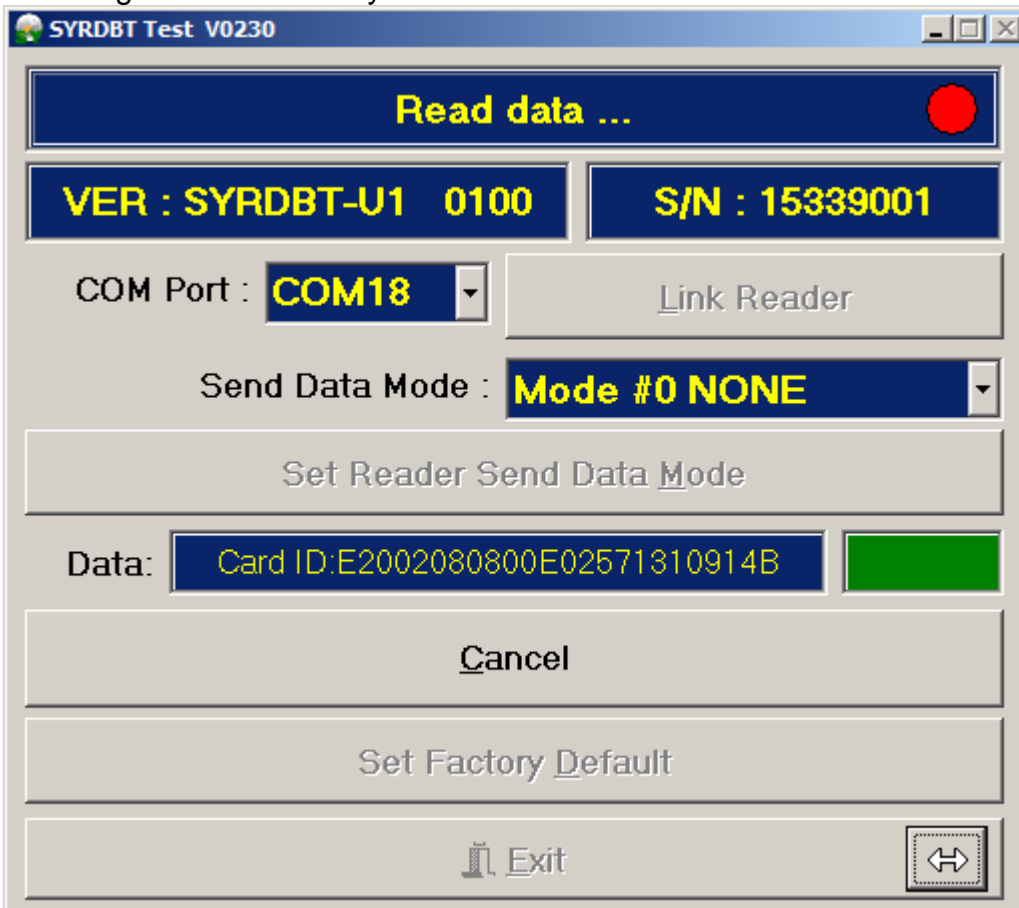


2. Select correct COM port to link reader.

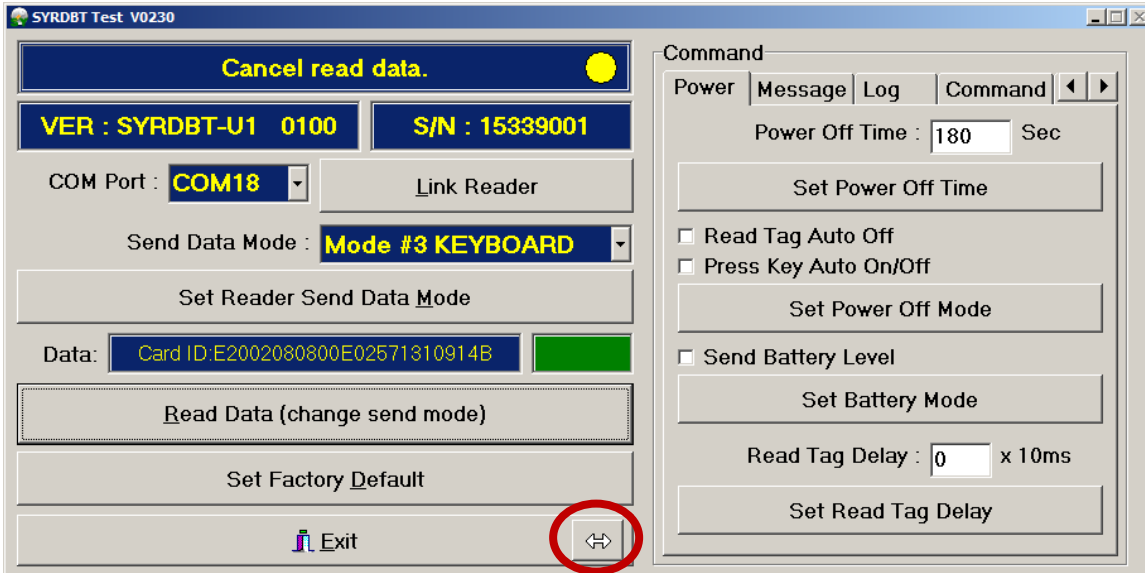


Set Factory Default : Click to restore the factory default.

3. Read tag data immediately.

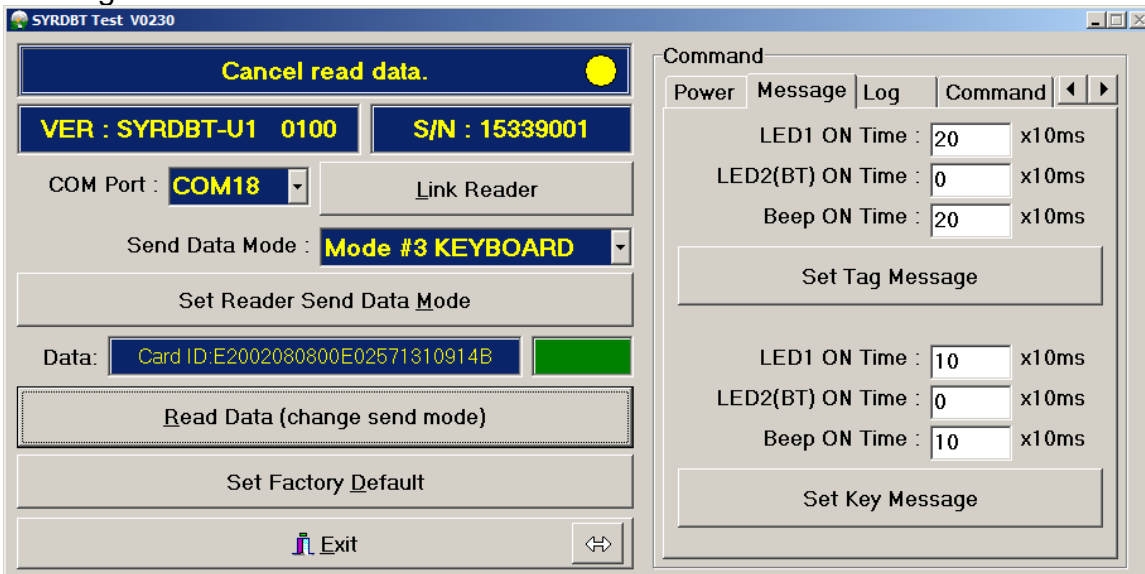


#### 4. Power command



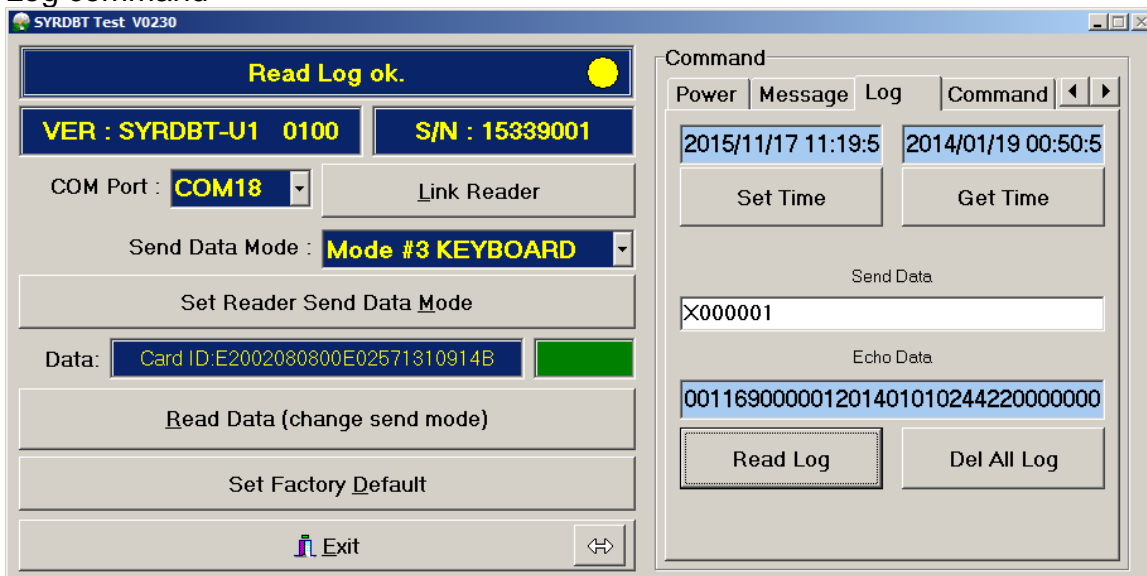
- a. Power off time : Default is 180 seconds, set to 0 is disable.
- b. Power off mode : Read tag auto off and press key auto off. Default is disable.
- c. Send battery level: Reader will send reader's battery voltage when tag data. Default is disable.
- d. Read tag delay : The intermission time of card reading.

#### 5. Message command



- Set tag message: Setup period of LED light and beep when read tag.
- Set key message: Setup period of LED light and beep when press key button.

## 6. Log command



Set time: Synchronize reader's clock to computer's time.

Get time: Get reader's current time.

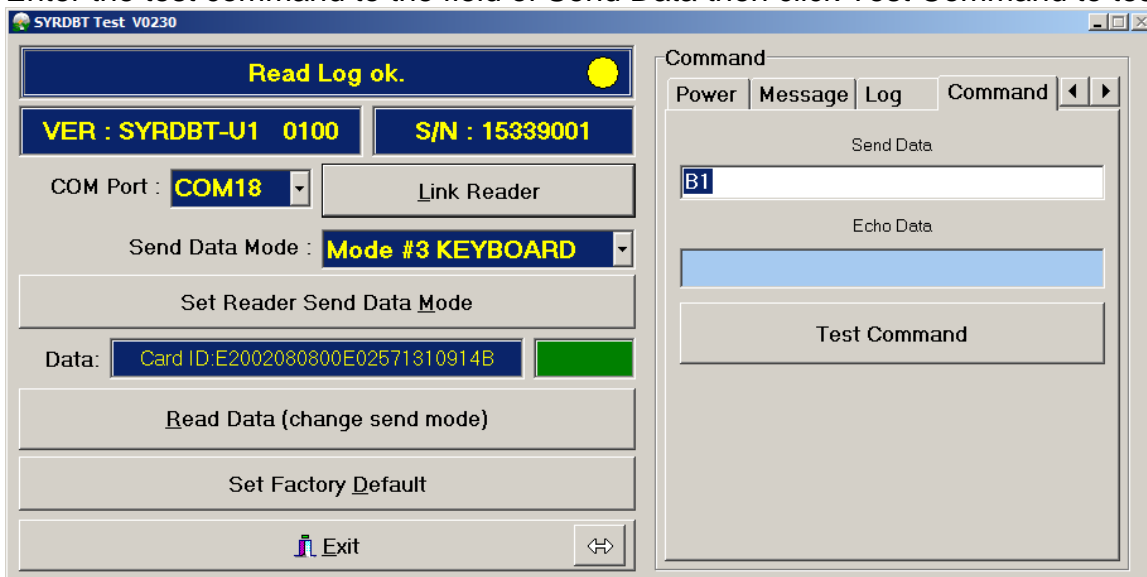
Read log : Input log command to read reader's log.

ex. X000001 means read log No.1, X000153 means read log No.153.

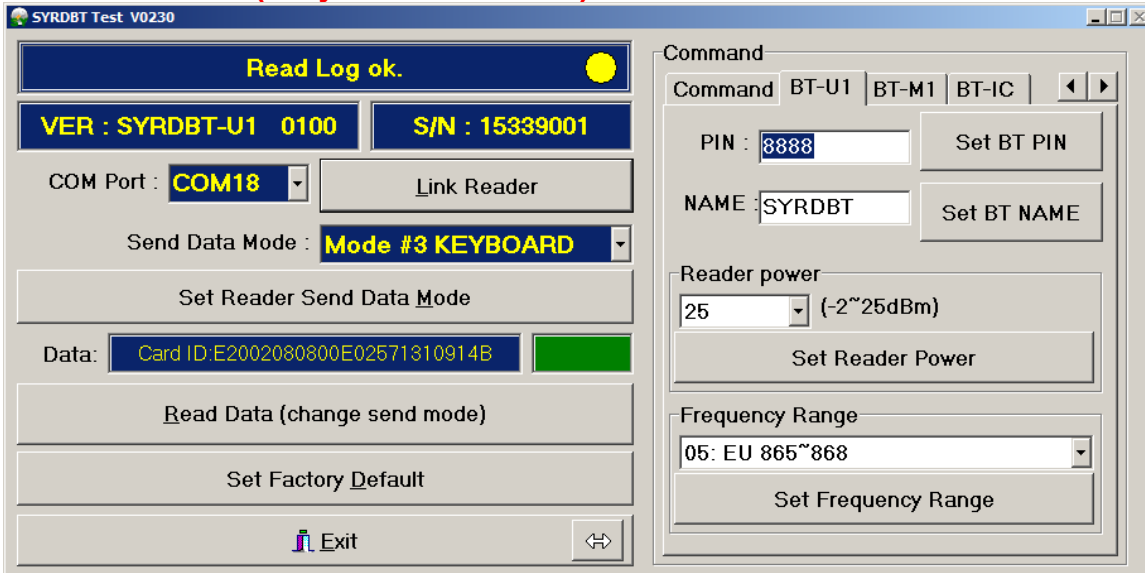
Del all log: Clear all log data in reader.

## 7. Command test:

Enter the test command to the field of Send Data then click Test Command to test.



8. BT-U1 command (Only for SYRDBT-U1)



Set BT PIN : Setup reader's Bluetooth pin code.

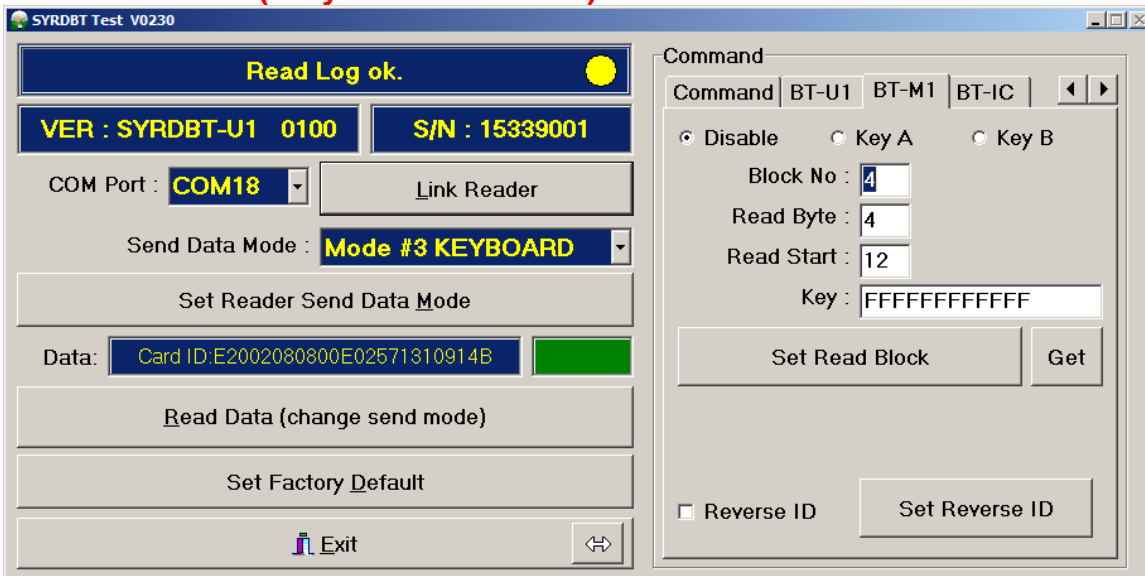
Set BT NAME: Setup reader's Bluetooth device name.

Read power: Adjust reader's UHF RFID power.

25 dbm is the max range (default setting), -2 is the shortest read range.

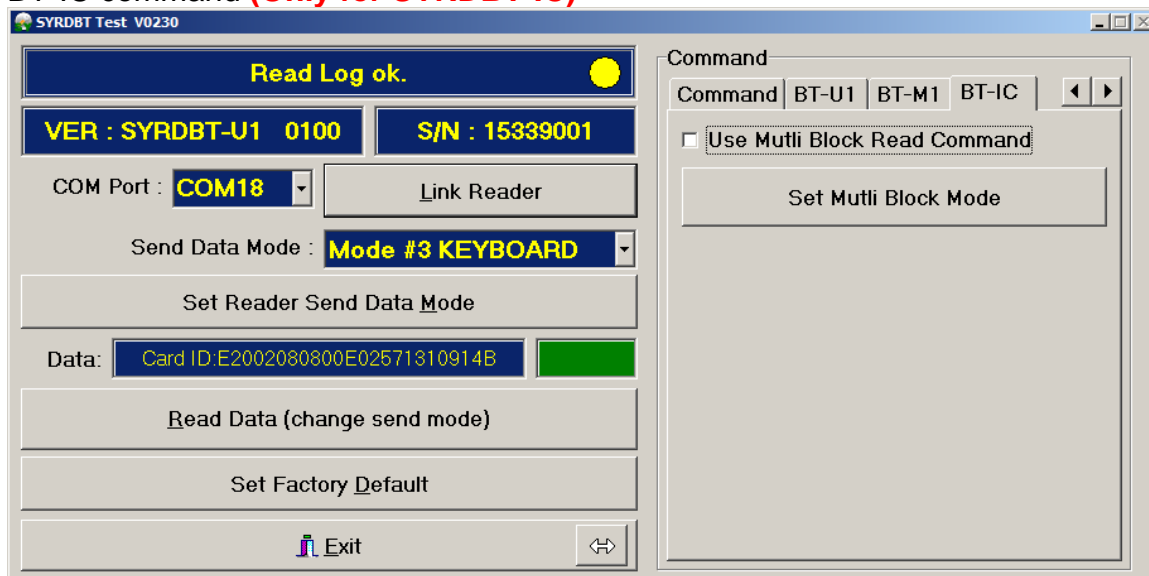
Frequency Range: Adjust reader's UHF RFID frequency range for different country.

9. BT-M1 command (Only for SYRDBT-M1)



Setup reader to read mifare specific block. Default is disable.

10. BT-IC command (Only for SYRDBT-IC)



Set Multi Block mode: Enable to support I-code multi block read command.